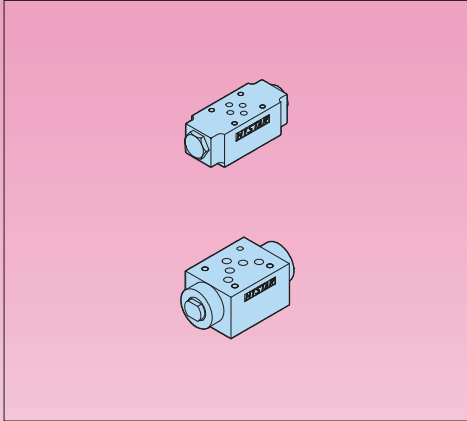


CHECK MODULAR VALVES

■ Pilot Operated Check Valves(Modular Type)



Model & Symbol		Model & Symbol	
MPA-01 (03)		MPA-04 (06)	
MPB-01 (03)		MPB-04 (06)	
MPW-01 (03)		MPW-04 (06)	



■ Ratings

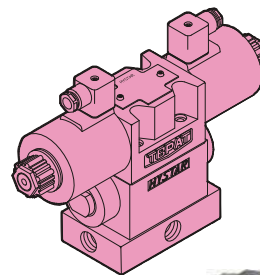
Model	Max Operating Pres bar (PSI)	Max Flow lpm (USgpm)	Valve Size	Weight kg (lb)
MP*-01-*	250 (3600)	50 (13.2)	1/8"	1.2 (2.6)
MP*-03-*	250 (3600)	100 (26.5)	3/8"	3.7 (8.1)
MP*-04-*	250 (3600)	190 (50.2)	1/2"	7.0 (15.4)
MP*-06-*	250 (3600)	300 (79.3)	3/4"	11.2 (24.6)

- This Valve is of the modular design improved from the pilot operated check valve used for preventing the actuator from self-operating, as well as for valve position holding.
- Cracking pressure of check valve is 2 bar.
- The valve is of the internal drain type.

■ Ordering Code

MP **A** - **03** - **2** - **20**

Series No	Control Line	Valve Size	Cracking Pressure	Design No
Pilot Operated Check Modular Valves	A : A Port 	(DSG-) 01 (NFPA-D03) 	2: 2 bar 	20 DIN 912 bolts
	B : B Port 	(DSG-) 03 (NFPA-D05) 	4: 4 bar 	2090 UNC bolts (North America)
	W : A & B Port 	(DSHG-) 04 (NFPA-D07) 		Design No. 30 Decompression Type
		(DSHG-) 06 (NFPA-D08) 		



MPW-03-30

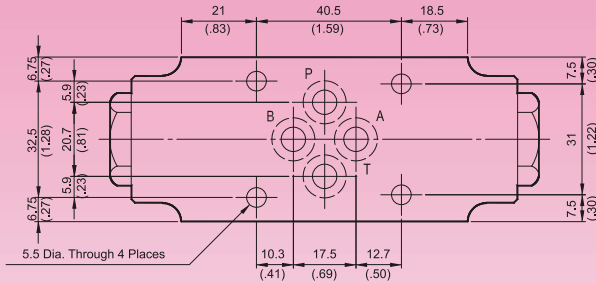
DIMENSIONS

MILLIMETERS(INCHES)

MPW - 01

Pilot Operated Check Valves(Modular Type)

MOUNTING SURFACE:MP*-01-CETOP3
ISO 03-NFPAD03



Valve Specifications & Attachment

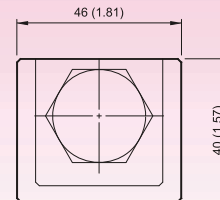
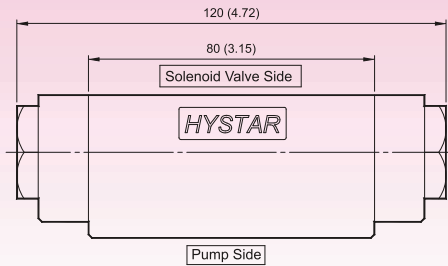
Flow Rating	50 lpm (13.2 gpm)
Max. Pressure	250 bar (3600 psi)
Weight kg.(lbs.)	1.2 (2.6)
CODE:20	M5 X85LgX4pcs
CODE:2090	10-24UNCX3-1/4"LgX4pcs
Mounting Surface O-Ring P9 x 4 pc	



SYMBOL



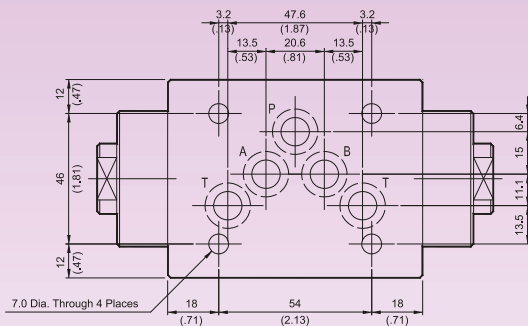
D



MPW - 03

Pilot Operated Check Valves(Modular Type)

MOUNTING SURFACE:MP*-03-CETOP5
ISO 05-NFPAD05



Valve Specifications & Attachment

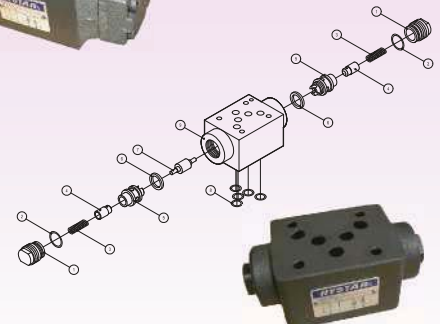
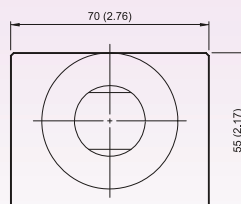
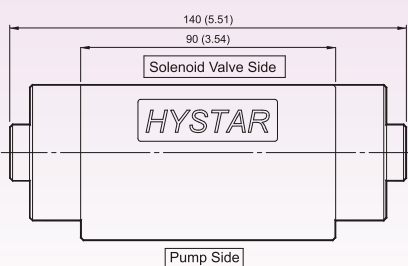
Flow Rating	100 lpm (26.5 gpm)
Max. Pressure	250 bar (3600 psi)
Weight kg.(lbs.)	3.5 (7.7)
CODE:20	M6 X90LgX4pcs
CODE:2090	1/4-20UNCX3-1/2LgX4pcs
Mounting Surface O-Ring P12 x 5 pc	



SYMBOL



MPW-03-30

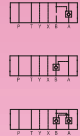
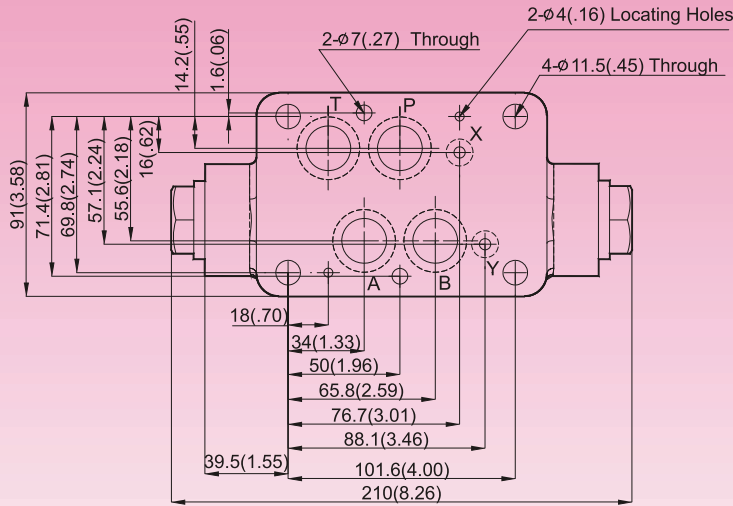


DIMENSIONS

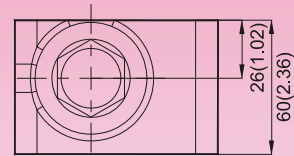
MILLIMETERS(INCHES)

MPW - 04 Pilot Operated Check Valves(Modular Type)

MOUNTING SURFACE:MP*-04-CETOP7
ISO 07-NFPAD07



SYMBOL



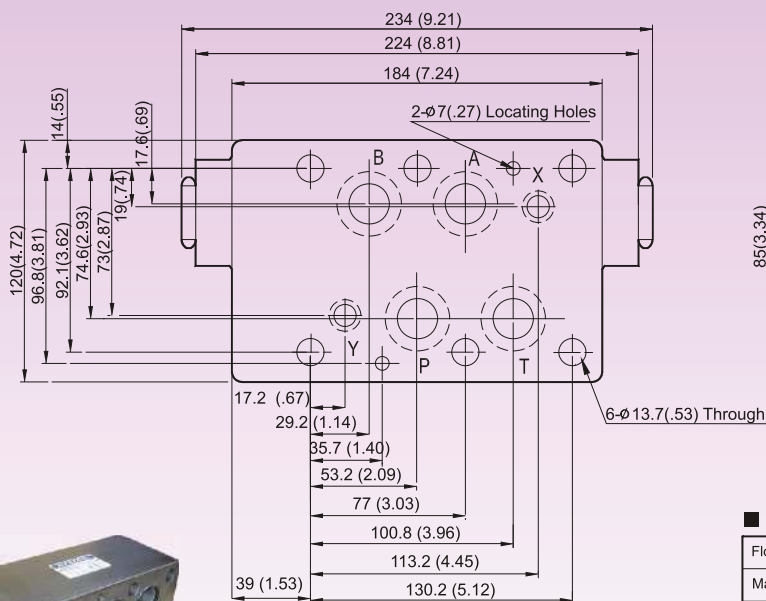
MPA-04
MPB-04
MPW-04

Valve Specifications & Attachment

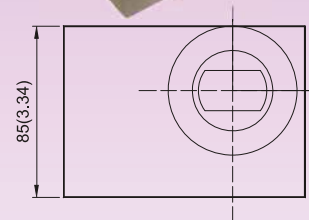
Flow Rating	190 lpm (50.2 gpm)
Max. Pressure	250 bar (3600 psi)
Weight kg(lbs.)	7.0 (15.4)
CODE:20	M6X125LgX2pcs M10X120LgX4pcs
CODE:2090	1/4-20UNCX4-7/8"LgX2pcs 3/8-16UNCX4-5/8"Lg X4pcs
Mounting Surface O-Ring P9 x 2 pc & P22A x 4 pcs	

MPW - 06 Pilot Operated Check Valves(Modular Type)

MOUNTING SURFACE:MP*-06-CETOP8
ISO 08-NFPAD08



SYMBOL



MPA-06
MPB-06
MPW-06

Valve Specifications & Attachment

Flow Rating	300 lpm (79.3 gpm)
Max. Pressure	250 bar (3600 psi)
Weight kg(lbs.)	11.2 (24.6)
CODE:20	M12X140LgX6pcs
CODE:2090	1/2-13UNCX4-5/8"Lg X6pcs
Mounting Surface O-Ring P12 x 2 pc, P28 x 4 pcs	