



257 SERIES PUMPS AND MOTORS

MEDIUM DISPLACEMENT SLEEVE BUSHING PUMPS AND MOTORS



**P257 SERIES TANDEM
SINGLE INLET/DUAL OUTLET**

257 SERIES FEATURES

- ❑ Heavy duty sleeve bushing design in a medium frame size
- ❑ Cubic inch displacements from 1.29 through 6.43
- ❑ Working pressure up to 4500 PSI
- ❑ Speeds up to 2400 RPM
- ❑ Flows up to 65 GPM
- ❑ Doweled and high strength cast iron construction
- ❑ 100% factory tested
- ❑ High strength alloy steel gear and shaft sets
- ❑ A wide range of porting, mounting, and shaft options available
- ❑ Pressure balanced wear plates maintain high pump efficiency throughout all operating ranges
- ❑ Both single inlet/single outlet and single inlet/dual outlet bearing carriers available



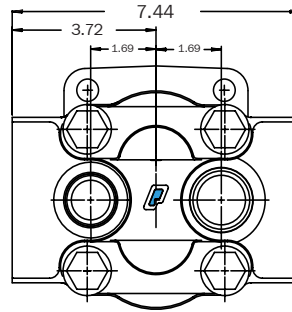
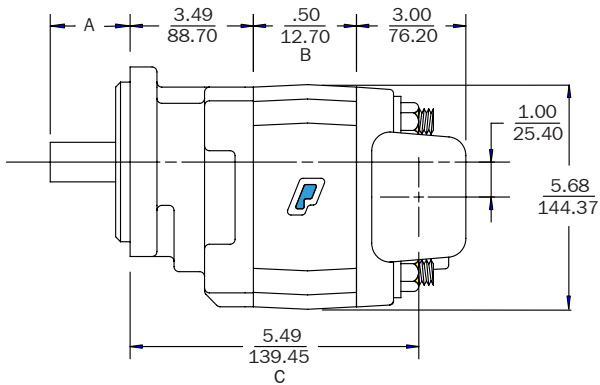
P257 SERIES SINGLE



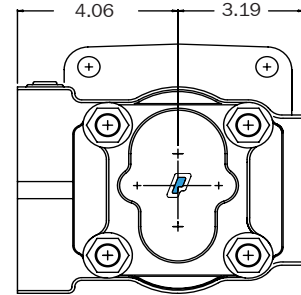
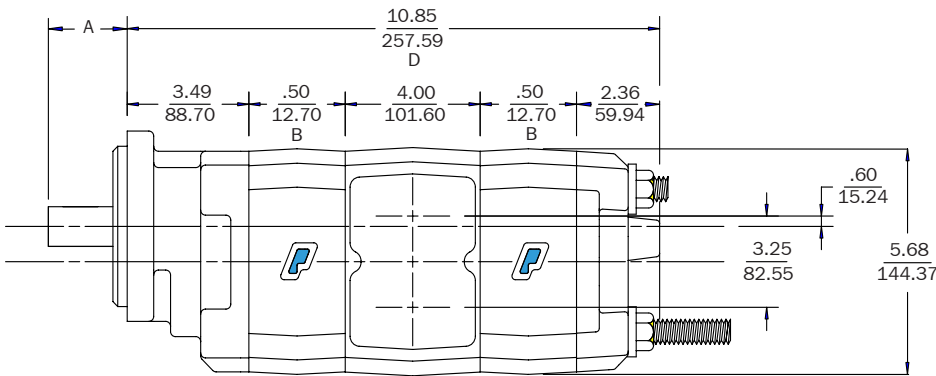
The Sensible Choice



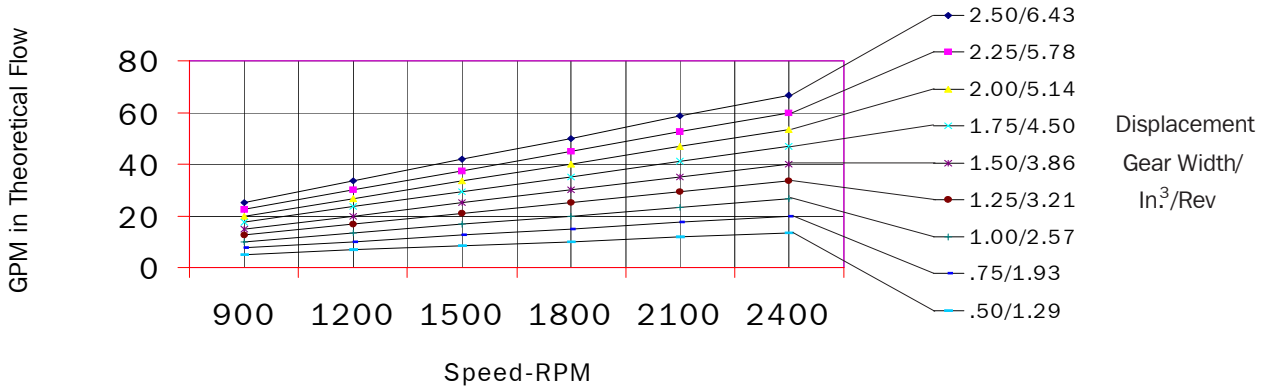
Dimensional Data (inches)



- A. See bushing series catalog for lengths and dimensions
- B. 0.50" plus gear width
- C. 5.49" plus gear width
- D. 10.85" plus total gear width



P257 Performance Chart/Specifications



| GEAR WIDTH (IN) | DISPL CU IN/CC | MAX RPM | MIN RPM | MAX PSI/BAR |
|-----------------|----------------|---------|---------|-------------|
| 0.50 | 1.29/21 | 2400 | 600 | 4500/310 |
| 0.75 | 1.93/32 | 2400 | 600 | 4500/310 |
| 1.00 | 2.57/42 | 2400 | 600 | 4500/310 |
| 1.25 | 3.21/53 | 2400 | 600 | 4500/310 |
| 1.50 | 3.86/63 | 2400 | 600 | 3500/241 |
| 1.75 | 4.50/74 | 2400 | 600 | 3250/224 |
| 2.00 | 5.14/84 | 2400 | 600 | 3000/207 |
| 2.25 | 5.78/95 | 2400 | 600 | 2750/190 |
| 2.50 | 6.43/105 | 2400 | 600 | 2500/172 |