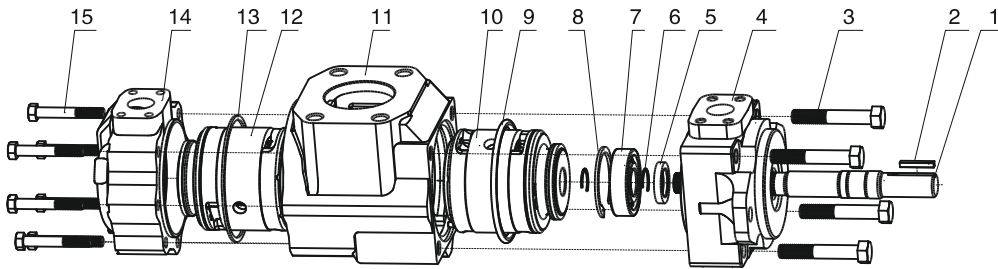
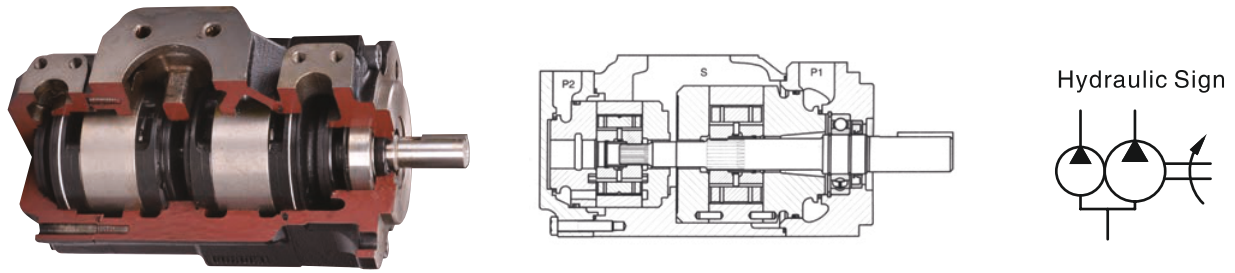


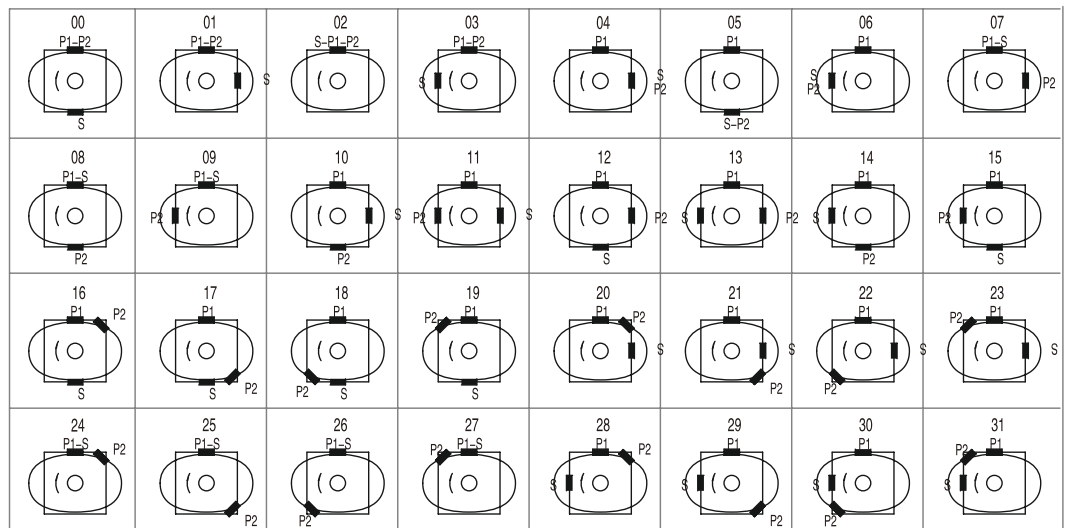
**T6、T67、T7 Series-Double pumps**



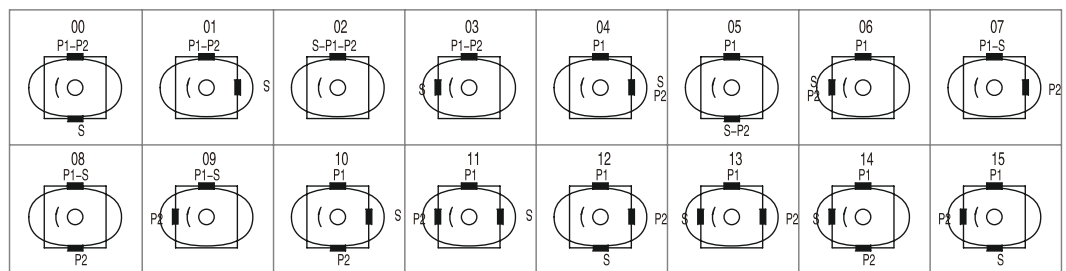
NO.	Part	Qty	NO.	Part	Qty	NO.	Part	Qty
1	Shaft	1	6	Cir Clip For Shaft	2	11	Middle Body	1
2	Straight Key	1	7	Ball Bearing	1	12	Rear Cartridge	1
3	Hexagon Head Bolt	4	8	Cir Clip For Hole	1	13	Rectangle Seal Ring	1
4	Front Cover	1	9	Rectangle Seal Ring	1	14	Rear Cover	1
5	Shaft Seal	1	10	Front Cartridge	1	15	Hexagon Head Bolt	4

**Port positions(Views from shaft end of pump)**

T7BB(S)  
T7DB(S)  
T7EB(S)  
T67CB  
T6CC  
T67DB  
T6DC  
T67EB  
T67EC  
T6EC



T7DD(S)  
T7ED(S)  
T7EE(S)  
T7ED  
T6ED  
T6EE



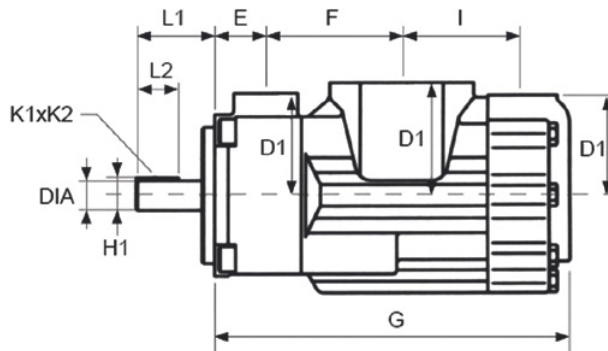
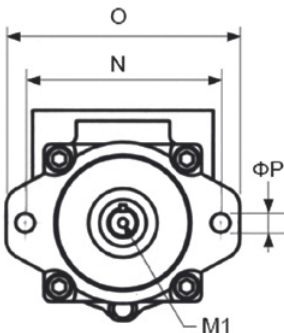
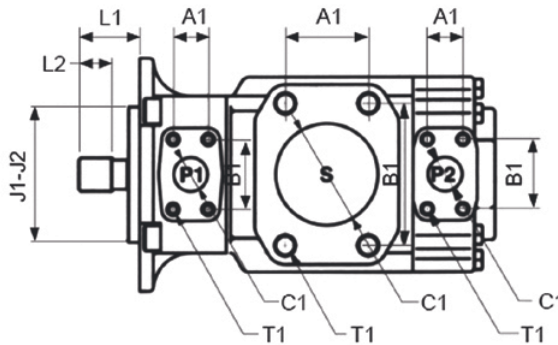
**Model Designation**

T6CC	S	W	-025	-017	-1	R	02	-C	1	10
Series	Type Code	Vice Type Code	Flow-shaft end Pump	Flow-cover end pump	Shaft type	Rotation	Port positions	Design number	Sealing Level	Port dimensions
T7BB	NO: USE ISO 3019 Installation Flange S: USE SAE C J744 installation flange	NO	B02, B03, B04, B05, B06, B07, B08, B10, B12, B15	B02, B03, B04, B05, B06, B07, B08, B10, B12, B15	See size of shaft	Views from shaft end of pump R- right hand for clockwise L- left hand for counter-clockwise	see picture below	C	1-S1, NBR Nitrile rubber 5-S5, Fluororubber	00, 01, See installation dimensions
T7DB			B14, B17, B20, B22, B24, B28, B31, B35, B38, B42	B02, B03, B04, B05, B06, B07, B08, B10, B12, B15						00, 01, M1 See installation dimensions
T7DD			B14, B17, B20, B22, B24, B28, B31, B35, B38, B42	B14, B17, B20, B22, B24, B28, B31, B35, B38, B42						---
T7EB			042, 045, 050, 052, 054, 057, 062, 066, 072, 085	B02, B03, B04, B05, B06, B07, B08, B10, B12, B15						
T7ED			042, 045, 050, 052, 054, 057, 062, 066, 072, 085	B14, B17, B20, B22, B24, B28, B31, B35, B38, B42						
T7EE			042, 045, 050, 052, 054, 057, 062, 066, 072, 085	042, 045, 050, 052, 054, 057, 062, 066, 072, 085						
T67CB	NO: industrial type M: truck type P: truck type double seal kits S: truck type, use SAE SAE C J744 installation flange	W: Heavy str keyed shaft	003/B03, 005/B05, 006/B06, 008/B08, 010/B10, 012/B12, 014/B14, 017/B17, 020/B20, 022/B22, 025/B25, 028/B28, 031/B31	B02, B03, B04, B05, B06, B07, B08, B10, B12, B15	See size of shaft	Views from shaft end of pump R- right hand for clockwise L- left hand for counter-clockwise	see picture below	C	1-S1, NBR Nitrile rubber 5-S5, Fluororubber	00, 01, See installation dimensions
T6CC			003/B03, 005/B05, 006/B06, 008/B08, 010/B10, 012/B12, 014/B14, 017/B17, 020/B20, 022/B22, 025/B25, 028/B28, 031/B31	003/B03, 005/B05, 006/B06, 008/B08, 010/B10, 012/B12, 014/B14, 017/B17, 020/B20, 022/B22, 025/B25, 028/B28, 031/B31						00, 01, See installation dimensions
T67DB			014/B14, 017/B17, 020/B20, 024/B24, 028/B28, 031/B31, 035/B35, 038/B38, 042/B42, 045/B45, 050/B50, 061	B02, B03, B04, B05, B06, B07, B08, B10, B12, B15						---
T67DC			B14, B17, B20, B22, B24, B28, B31, B35, B38, B42	003/B03, 005/B05, 006/B06, 008/B08, 010/B10, 012/B12, 014/B14, 017/B17, 020/B20, 022/B22, 025/B25, 028/B28, 031/B31						---
T6DC			014, 017, 020, 024, 028, 031, 035, 038, 042, 045, 050, 061	003/B03, 005/B05, 006/B06, 008/B08, 010/B10, 012/B12, 014/B14, 017/B17, 020/B20, 022/B22, 025/B25, 028/B28, 031/B31						00, 01, M1, See installation dimensions
T67EB			042, 045, 050, 052, 057, 062, 066, 072, 085	B02, B03, B04, B05, B06, B07, B08, B10, B12, B15						---
T6EC			042, 045, 050, 052, 057, 062, 066, 072, 085	003/B03, 005/B05, 006/B06, 008/B08, 010/B10, 012/B12, 014/B14, 017/B17, 020/B20, 022/B22, 025/B25, 028/B28, 031/B31						
T67EC			042, 045, 050, 052, 057, 062, 066, 072, 085	003/B03, 005/B05, 006/B06, 008/B08, 010/B10, 012/B12, 014/B14, 017/B17, 020/B20, 022/B22, 025/B25, 028/B28, 031/B31						
T6ED			042, 045, 050, 052, 057, 062, 066, 072, 085	014/B14, 017/B17, 020/B20, 024/B24, 028/B28, 031/B31, 035/B35, 038/B38, 042/B42, 045/B45, 050/B50, 061						
T6EE			042, 045, 050, 052, 057, 062, 066, 072, 085	042, 045, 050, 052, 057, 062, 066, 072, 085						

003/B03:In displacement code, 0 means single steering valve plate structure, B means the two steering valve plate structure. The data of relevant series ,model are unanimous.Please see T6 series-single pumps data

**Installation Dimensions**

T6CC  
T6DC  
T6EC  
T6ED



	T6CC	T6DC
E	38.1	38.1
F	101.6	114.3
G	265.6	286.0
I	88.2	109.5
J1	101.60	127.00
J2	101.55	126.95
N	146.0	181.0
O	174.5	212.4
ΦP	14.3	17.5

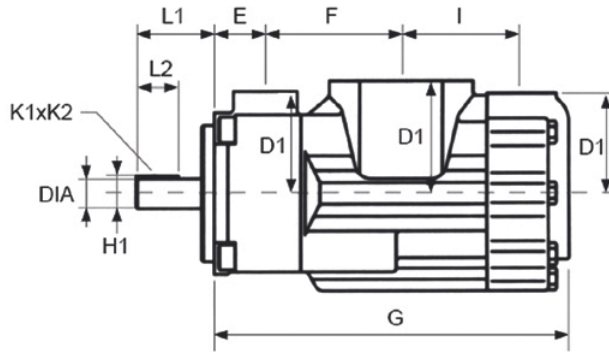
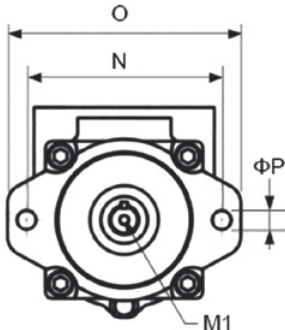
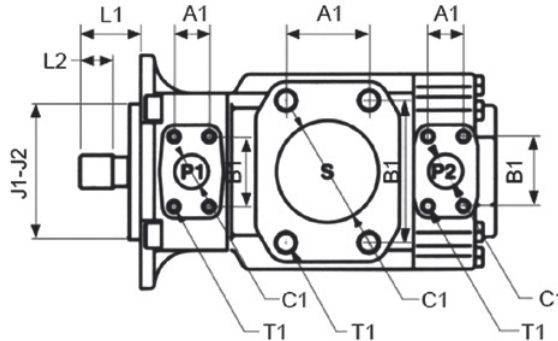
	T6EC	T6ED
E	52.3	52.3
F	118.5	133.5
G	331.6	361.0
I	136.7	148.2
J1	127.00	127.00
J2	126.95	126.95
N	181.0	181.0
O	213.0	213.0
ΦP	17.5	17.5

	T6EE	T6EES
E	42.9	42.9
F	167.3	167.3
G	406.8	406.8
I	157.9	157.9
J1	250.00	165.10
J2	249.93	165.05
N	224.5x224.5	224.5x224.5
O	273x273	273x273
ΦP	20.6	20.6

Oil port			Flange	Install Dimensions(mm)				
				A1	B1	ΦC1	D1	T1 Thread
T6CC	P1	1"	F08	26.2	52.4	25.4	76.2	3/8"-16UNCx19.0
	P2	01&11: 3/4"	F06	22.2	47.6	19.0	76.2	3/8"-16UNCx19.0
		00&10: 1"	F08	26.2	52.4	25.4	74.7	
	S	10&11: 2-1/2"	F20	50.8	88.9	63.5	84.1	1/2"-13UNCx23.9
00&01: 3"		F24	61.9	106.4	76.2	84.1	5/8"-11UNCx28.4	
T6DC	P1	00&01: 1-1/4"	F10	30.2	58.7	31.8	82.6	7/16"-14UNCx22.3
		M1: 1-1/4"	F10	30.2	58.7	31.8	82.6	M12x22.3
	P2	01: 3/4"	F06	22.2	47.6	19.0	74.7	3/8"-16UNCx19.0
		00: 1"	F08	26.2	52.4	25.4	74.7	
	S	M1: 3/4"	F06	22.2	47.6	19.0	74.7	M10x19
		00&01: 3"	F24	61.9	106.4	76.2	88.9	5/8"-11UNCx28.4
T6EC	P1	00&01: 3"	F24	61.9	106.4	76.2	88.9	M16x29
		M1: 3"	F24	61.9	106.4	76.2	88.9	
	P2	00&01: 3"	F24	61.9	106.4	76.2	88.9	5/8"-11UNCx28.4
T6ED	P1	1-1/2"	F12	35.7	69.9	38.1	98.6	1/2"-13UNCx23.4
	P2	1"	F08	26.2	52.4	25.4	74.7	3/8"-16UNCx19.0
	S	3-1/2"	F28	69.9	120.7	88.9	102.4	5/8"-11UNCx29.5
T6EE(S)	P1	1-1/2"	F12	35.7	69.9	38.1	139.7	1/2"-13UNCx30
	P2	1-1/2"	F12	35.7	69.9	37.1	98.6	1/2"-13UNCx23.4
	S	4"	F32	77.8	130.2	101.6	115	5/8"-11UNCx30

Installation Dimensions

T7BB(S)  
T7DB(S)  
T7EB(S)  
T67CB  
T67DB  
T67EB



	T7BB	T7BBS	T67CB
E	38.1	38.1	38.1
F	101.6	101.6	101.6
G	262.2	262.2	265.6
I	88.2	88.2	88.2
J1	100.00	101.60	101.60
J2	99.97	101.55	101.55
N	140.0	146.0	146.0
O	174.5	174.5	174.5
ΦP	14.0	14.3	14.3

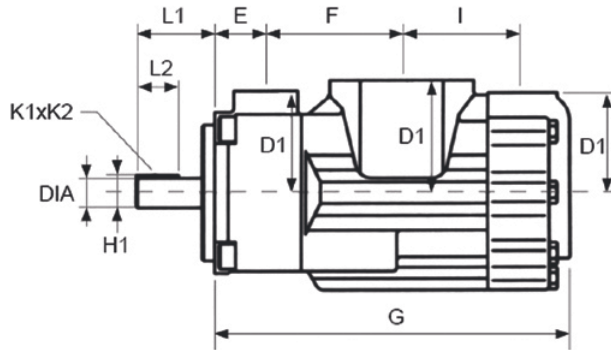
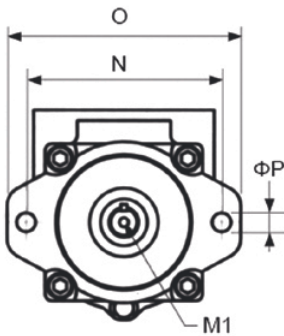
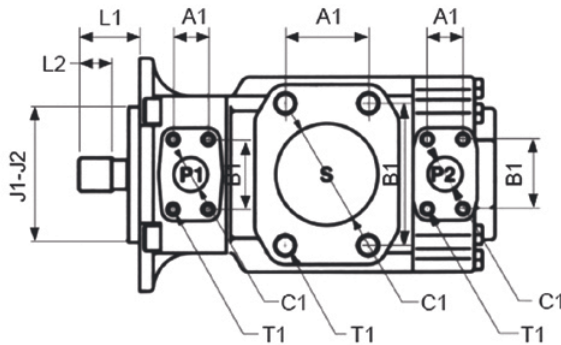
	T7DB	T7DBS	T67DB
E	38.1	38.1	38.1
F	114.3	114.3	114.3
G	286.0	286.0	286.0
I	109.5	109.5	109.5
J1	125.00	127.00	127.00
J2	124.94	126.95	126.95
N	180.0	181.0	181.0
O	212.4	212.4	212.4
ΦP	18.0	17.5	17.5

	T7EB	T7EBS	T67EB
E	52.3	52.3	52.3
F	118.5	118.5	118.5
G	331.6	331.6	331.6
I	136.7	136.7	136.7
J1	125.00	127.00	127.00
J2	124.94	126.95	126.95
N	180.0	181.0	181.0
O	213.0	213.0	213.0
ΦP	18.0	17.5	17.5

Oil port			Flange	Install Dimensions(mm)				
				A1	B1	ΦC1	D1	T1 Thread
T7BB(S)	P1	01: 3/4"	F06	22.2	47.6	19.0	76.2	3/8"-16UNCx19.0
		00: 1"	F08	26.2	52.4	25.4	76.2	
	P2	3/4"	F06	22.2	47.6	19.0	76.2	3/8"-16UNCx19.0
	S	2-1/2"	F20	50.8	88.9	63.5	84.1	1/2"-13UNCx23.9
T7DB(S)	P1	01: 1-1/4"	F10	30.2	58.7	31.8	82.6	7/16"-14UNCx22.3
		M1: 1-1/4"	F10	30.2	58.7	31.8	82.6	M12x22.3
	P2	01: 3/4"	F06	22.2	47.6	19.0	74.7	3/8"-16UNCx19.0
		00: 1"	F08	26.2	52.4	25.4	74.7	
	S	M1: 3/4"	F06	22.2	47.6	19.0	74.7	M10x19
		3"	F24	61.9	106.4	76.2	88.9	5/8"-11UNCx29
T7EB(S)	P1	1-1/2"	F12	35.7	69.9	38.1	98.6	1/2"-13UNCx23.4
	P2	3/4"	F06	22.2	47.6	19.0	74.7	3/8"-16UNCx19.0
	S	3-1/2"	F28	69.9	120.7	88.9	102.4	5/8"-11UNCx29.5
T67CB	P1	1"	F08	26.2	52.4	25.4	76.2	3/8"-16UNCx19.0
	P2	3/4"	F06	22.2	47.6	19.0	76.2	3/8"-16UNCx19.0
	S	2-1/2"	F20	50.8	88.9	63.5	84.1	1/2"-13UNCx23.9
T67DB	P1	1-1/4"	F10	30.2	58.7	31.8	82.6	7/16"-14UNCx22.3
	P2	3/4"	F06	22.2	47.6	19.0	76.2	3/8"-16UNCx19.0
	S	3"	F24	61.9	106.4	76.2	88.9	5/8"-11UNCx24.0
T67EB	P1	1-1/2"	F12	35.7	69.9	38.1	98.6	1/2"-13UNCx23.4
	P2	3/4"	F06	22.2	47.6	19.0	74.7	3/8"-16UNCx19.0
	S	3-1/2"	F28	69.9	120.7	88.9	102.4	5/8"-11UNCx24.0

**Installation Dimensions**

T7DD(S)  
T7ED(S)  
T7EE(S)  
T67DC  
T67EC



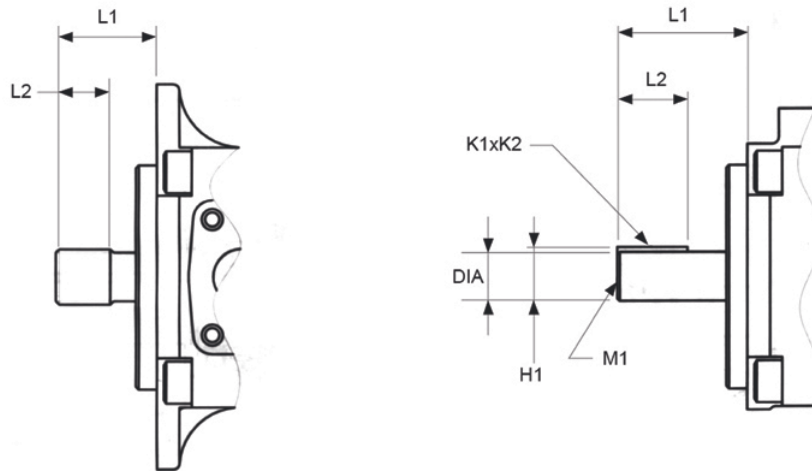
	T7DD	T7DDS	T67DC
E	38.3	38.3	38.1
F	148.3	148.3	114.3
G	347.7	347.7	286.0
I	134.2	134.2	109.5
J1	125.000	127.00	127.00
J2	124.937	126.95	126.95
N	180.0	181.0	181.0
O	213.0	213.0	212.4
ΦP	14.0	14.3	17.5

	T7ED	T7EDS	T67EC
E	52.3	52.3	52.3
F	133.5	133.5	118.5
G	361.0	361.0	331.6
I	148.2	148.2	136.7
J1	125.00	127.00	127.00
J2	124.94	126.95	126.95
N	180.0	181.0	181.0
O	213.0	213.0	213.0
ΦP	18.0	17.5	17.5

	T7EE	T7EES
E	42.9	42.9
F	167.3	167.3
G	406.8	406.8
I	157.9	157.9
J1	250.00	165.10
J2	249.93	165.05
N	224.5x224.5	224.5x224.5
O	273x273	273x273
ΦP	20.6	20.6

	Oil port		Flange	Install Dimensions(mm)				
				A1	B1	ΦC1	D1	T1 Thread
T7DD(S)	P1	1-1/4"	F10	30.2	58.7	31.8	101.6	7/16"-14UNCx22.3
	P2	1-1/4"	F10	30.2	58.7	31.8	101.6	7/16"-14UNCx24
	S	4"	F32	77.8	130.2	101.6	114.9	5/8"-11UNCx30
T7ED(S)	P1	1-1/2"	F12	35.7	69.9	37.1	98.6	1/2"-13UNCx23.4
	P2	1-1/4"	F10	30.2	58.7	31.8	101.6	7/16"-14UNCx24
	S	4"	F32	77.8	130.2	101.6	102.4	5/8"-11UNCx30
T7EE(S)	P1	1-1/2"	F12	35.7	69.9	38.1	139.7	1/2"-13UNCx30
	P2	1-1/2"	F12	35.7	69.9	37.1	98.6	1/2"-13UNCx23.4
	S	4"	F32	77.8	130.2	101.6	115	5/8"-11UNCx30
T67DC	P1	1-1/4"	F10	30.2	58.7	31.8	82.6	7/16"-14UNCx22.3
	P2	1"	F08	26.2	52.4	25.4	74.7	3/8"-16UNCx19.0
	S	3"	F24	61.9	106.4	76.2	88.9	5/8"-11UNCx28.5
T67EC	P1	1-1/2"	F12	35.7	69.9	37.1	98.6	1/2"-13UNCx23.4
	P2	1"	F08	26.2	52.4	25.4	74.7	3/8"-16UNCx19.0
	S	3-1/2"	F28	69.9	120.7	88.9	102.4	5/8"-11UNCx29.5

## Installation Dimensions



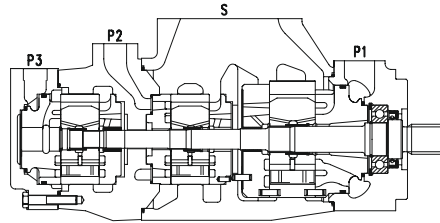
Shaft extension

Model	Shaft code	Max torque (N.m)	L1	L2	DIA	K1xK2	H1	M1
T7BB	5	●	70.0	40.0	25.006/24.993	8.00x7.00	28.22	–
T7BBS	1	238	58.2	31.7	22.225/22.200	4.76x4.71	24.53	–
	2	357	71.4	38.1	25.400/25.370	6.35x6.30	28.22	M8x16
	3	●	40.7	24.5	SAE J498b class1, Diametral pitch 16/32, 13T		–	–
	4	●	45.5	24.5	SAE J498b class1, Diametral pitch 16/32, 15T		–	–
T7DB	5	●	87.9	50.0	32.018/32.002	10.00x8.00	35.0	M10x20
T7DBS	1	●	83.6	49.3	31.75/31.70	7.94x7.89	35.27	M10x20
	2	●	73.2	38.1	31.75/31.70	7.94x7.89	35.27	–
	3	●	55.2	38.0	SAE J498b class1, Diametral pitch 12/24, 14T		–	–
	4	●	77.7	48.02	SAE J498b class1, Diametral pitch 12/24, 14T		–	–
T7DD	5	●	68.0	50.0	31.018/32.002	10.00x8.00	35.0	M10x20
T7DDS	1	●	84.0	49.3	31.75/31.70	7.94x7.89	35.27	M10x20
	2	●	91.0	50.8	38.10/38.05	9.52x9.47	40.36	M10x20
	3	●	56.0	38.0	SAE J498b class1, Diametral pitch 12/24, 14T		–	–
	4	●	46.0	24.5	SAE J498b class1, Diametral pitch 16/32, 15T		–	–
T7EB, T7ED	5	●	90.0	50.0	38.018/38.002	10.00x8.00	41.3	M10x20
T7EBS, T7EDS	1	●	90.9	50.8	38.10/38.05	9.52x9.47	42.36	M10x20
	2	●	61.9	38.1	31.75/31.70	7.94x7.89	35.27	–
	3	●	55.9	38.1	SAE J498b class1, Diametral pitch 12/24, 14T		–	–
	4	●	62.2	31.5	SAE J498b class1, Diametral pitch 12/24, 17T		–	–
T7EE	2	●	92.0	63.0	45.000/44.975	14.00x9.00	48.5	M12x24
T7EES	1	●	90.9	63.5	38.100/38.075	9.52x9.47	42.36	M10x20
	3	●	62.2	31.5	SAE J498b class1, Diametral pitch 12/24, 17T		–	–
	4	●	75.0	48.8	SAE J498b class1, Diametral pitch 8/16, 13T		–	–
T67CB, T6CC	1	238	58.2	31.7	22.225/22.200	4.76x4.71	24.53	–
	2	357	71.4	38.1	25.400/25.370	6.35x6.30	28.22	M8x16
	3	545	45.5	24.5	SAE J498b class1, Diametral pitch 16/32, 15T		–	–
	5	343	40.7	24.5	SAE J498b class1, Diametral pitch 16/32, 13T		–	–
T67DB, T67DC, T6DC	1	721	83.6	49.3	31.750/31.700	7.94x7.89	35.27	M10x20
	2	577	73.2	38.1	31.750/31.700	7.94x7.89	35.27	–
	3	●	55.2	38.0	SAE J498b class1, Diametral pitch 12/24, 14T		–	–
	4	●	77.7	48.0	SAE J498b class1, Diametral pitch 12/24, 14T		–	–
	5	●	83.4	60.0	34.900/34.875	7.94x7.89	38.42	M8x16
T67EB, T67EC, T6EC, T6ED	1	●	90.9	50.8	38.100/38.050	9.52x9.47	42.36	M10x20
	2	577	61.9	38.1	31.750/31.700	7.94x7.89	35.27	–
	3	●	55.7	38.0	SAE J498b class1, Diametral pitch 12/24, 14T		–	–
	4	●	62.2	31.5	SAE J498b class1, Diametral pitch 12/24, 17T		–	–

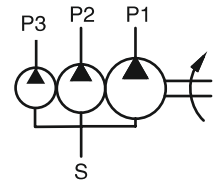
● work at maximum flow and pressure.



**T6、T67、T7Series-Treble pumps**



Hydraulic Sign



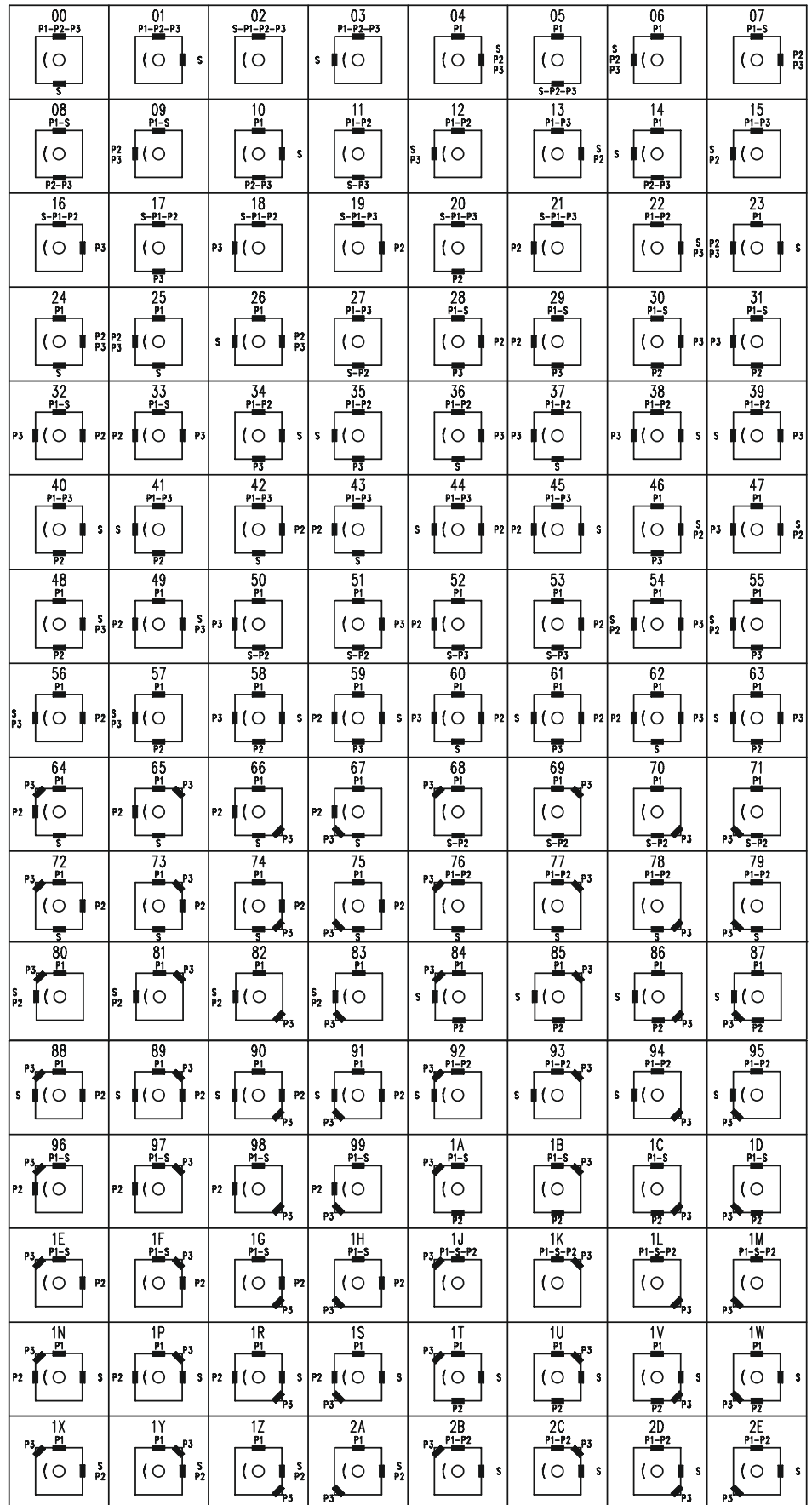
**Model Designation**

T6DCC	(M)	-042	-017	-010	-1	R	02	-A	1	01
Series	Type Code	Flow-shaft end Pump	Flow-mid pump	Flow-cover end pump	Shaft type	Rotation	Port positions	Design number	Sealing Level	Port dimensions
T67DBB		014/B14、017/B17、020/B20、024/B24、028/B28、031/B31、035/B35、038/B38、042/B42、045/B45、050/B50、061	B02、B03、B 04、B05、B06、B07、B08、B 10、B12、B15	B02、B03、B 04、B05、B06、B07、B08、B 10、B12、B15						
T67DCB		014/B14、017/B17、020/B20、024/B24、028/B28、031/B31、035/B35、038/B38、042/B42、045/B45、050/B50、061	003/B03、005/B05、006/B06、008/B08、010/B10、012/B12、014/B14、017/B17、020/B20、022/B22、025/B25、028/B28、031/B31	B02、B03、B 04、B05、B06、B07、B08、B 10、B12、B15						NO
T6DCC	NO: industrial type	014/B14、017/B17、020/B20、024/B24、028/B28、031/B31、035/B35、038/B38、042/B42、045/B45、050/B50、061	003/B03、005/B05、006/B06、008/B08、010/B10、012/B12、014/B14、017/B17、020/B20、022/B22、025/B25、028/B28、031/B31	003/B03、005/B05、006/B06、008/B08、010/B10、012/B12、014/B14、017/B17、020/B20、022/B22、025/B25、028/B28、031/B31		Views from shaft end of pump				00、01、See installation dimensions
T67ddb	M: truck type S: truck type use SAE J744 installation flange	014/B14、017/B17、020/B20、024/B24、028/B28、031/B31、035/B35、038/B38、042/B42、045/B45、050/B50、061	014/B14、017/B17、020/B20、024/B24、028/B28、031/B31、035/B35、038/B38、042/B42、045/B45、050/B50、061	B02、B03、B04、B05、B06、B07、B08、B 10、B12、B15	See size of shaft	R- right hand for clockwise L- left hand for counter-clockwise	see picture below	A	1-S1, NBR Nitrile rubber 5-S5, Fluororubber	NO
T6DDC		014/B14、017/B17、020/B20、024/B24、028/B28、031/B31、035/B35、038/B38、042/B42、045/B45、050/B50、061	014/B14、017/B17、020/B20、024/B24、028/B28、031/B31、035/B35、038/B38、042/B42、045/B45、050/B50、061	003/B03、005/B05、006/B06、008/B08、010/B10、012/B12、014/B14、017/B17、020/B20、022/B22、025/B25、028/B28、031/B31						00、01、See installation dimensions
T67EDB		042、045、050、052、057、062、066、072、085	014/B14、017/B17、020/B20、024/B24、028/B28、031/B31、035/B35、038/B38、042/B42、045/B45、050/B50、061	B02、B03、B04、B05、B06、B07、B08、B 10、B12、B15						NO
T6EDC		042、045、050、052、057、062、066、072、085	014/B14、017/B17、020/B20、024/B24、028/B28、031/B31、035/B35、038/B38、042/B42、045/B45、050/B50、061	003/B03、005/B05、006/B06、008/B08、010/B10、012/B12、014/B14、017/B17、020/B20、022/B22、025/B25、028/B28、031/B31						00、01、See installation dimensions

003/B03:In displacement code, 0 means single steering valve plate structure, B means the two steering valve plate structure. The data of relevant series ,model are unanimous.Please see T6 series-single pumps data

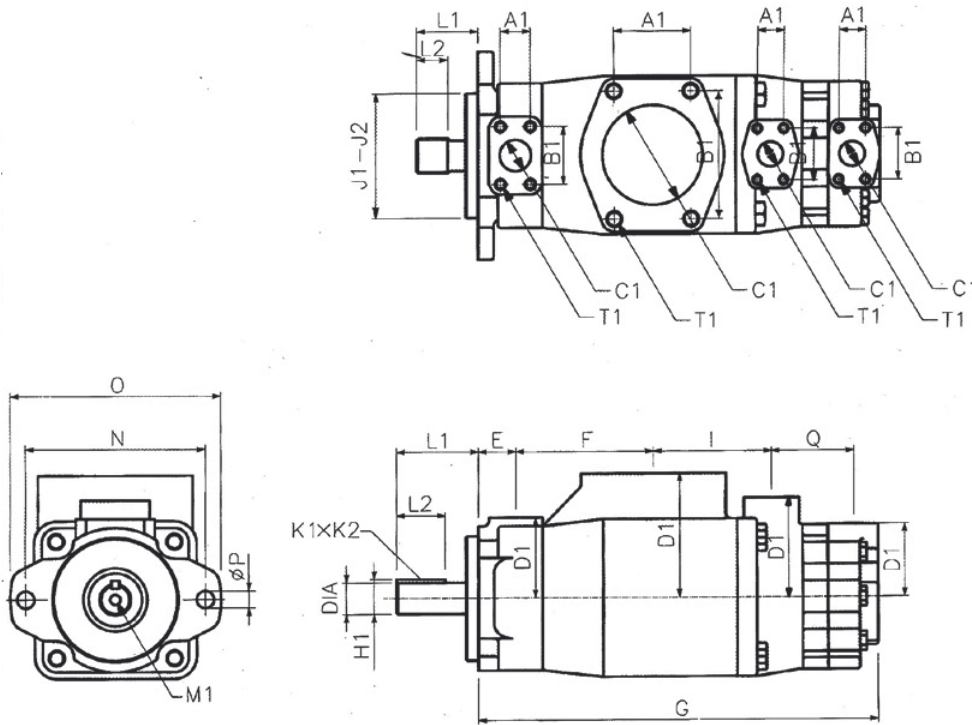
Port positions(Views from shaft end of pump)

T67DBB(S)  
 T67DCB(S)  
 T6DCC  
 T67DDBS  
 T6DDC  
 T6EDB(S)  
 T6EDC





**Installation Dimensions**



	T6DCC T67DCB T67DBB
E	38.1
F	138.0
G	404.0
I	119.3
J1	127.00
J2	126.95
N	181.0
O	212.4
ΦP	17.5
Q	84.4

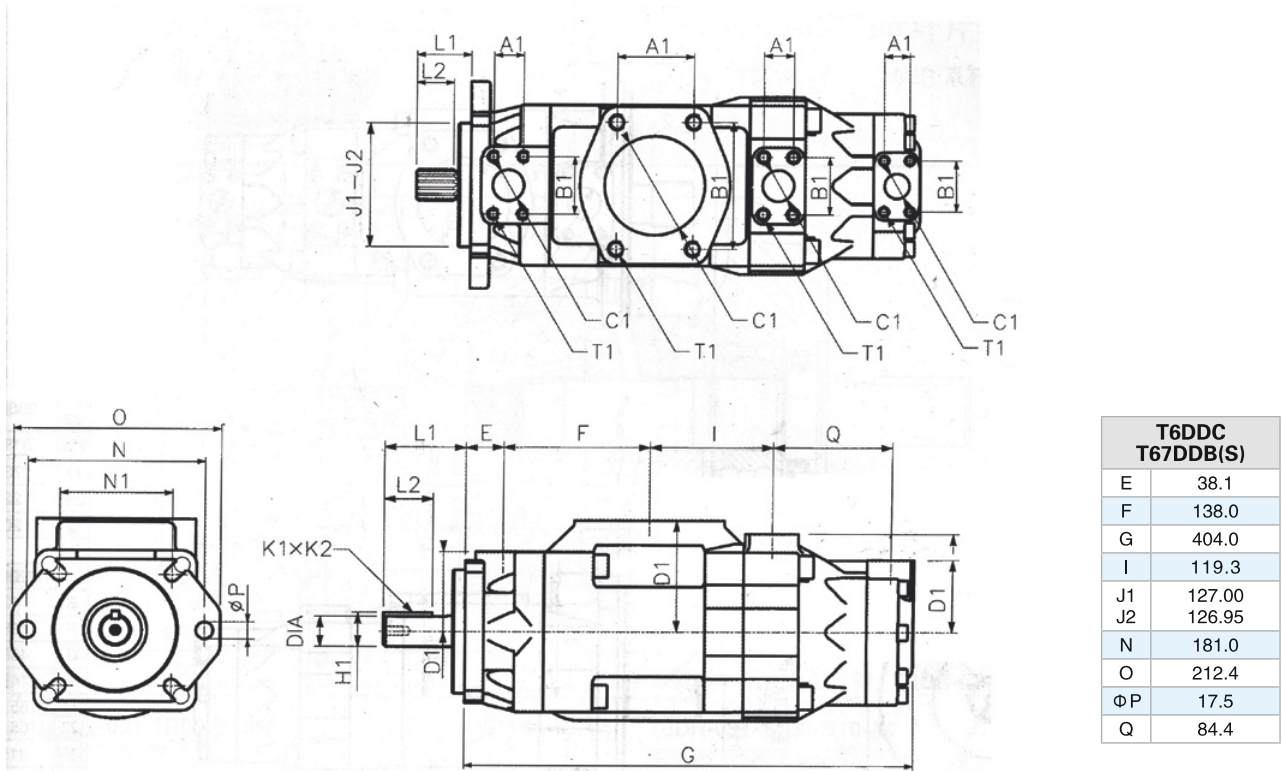
**Shaft extension**

Model	Shaft code	Max torque (N.m)	L1	L2	DIA	K1xK2	H1	M1
T6DCC T67DBB T67DCB	1	721	83.6	49.3	31.750/31.700	6.35x6.30	34.6	-
	2	1108	89.7	50.8	38.100/38.075	9.52x9.47	42.4	-
	3	●	55.2	38.0	SAE J498b class1, Diametral pitch 12/24, 14T		-	-
	4	●	61.0	31.5	SAE J498b class1, Diametral pitch 12/24, 17T		-	-
T6DCC	6	●	76.0	48.0	SAE J498b class1, Diametral pitch 12/24, 14T		-	-

● work at maximum flow and pressure.

Oil port			Flange	Install Dimensions(mm)				
				A1	B1	ΦC1	D1	T1 Thread
T67DBB T67DCB	P1	1-1/4"	F10	30.2	58.7	31.8	82.6	7/16"-14UNCx22.3
	P2	1"	F08	26.2	52.4	25.4	101.6	3/8"-16UNCx19.0
	P3	3/4"	F06	22.2	47.6	19.0	74.7	3/8"-16UNCx19.0
	S	4"	F32	77.8	130.2	101.6	127	5/8"-11UNCx30.0
T6DCC	P1	1-1/4"	F10	30.2	58.7	31.8	82.6	7/16"-14UNCx22.3
	P2	1"	F08	26.2	52.4	25.4	101.6	3/8"-16UNCx19.0
	P3	01: 3/4"	F06	22.2	47.6	19.0	74.7	3/8"-16UNCx19.0
		00: 1"	F08	26.2	52.4	25.4	74.7	
S	4"	F32	77.8	130.2	101.6	127	5/8"-11UNCx30.0	

Installation Dimensions



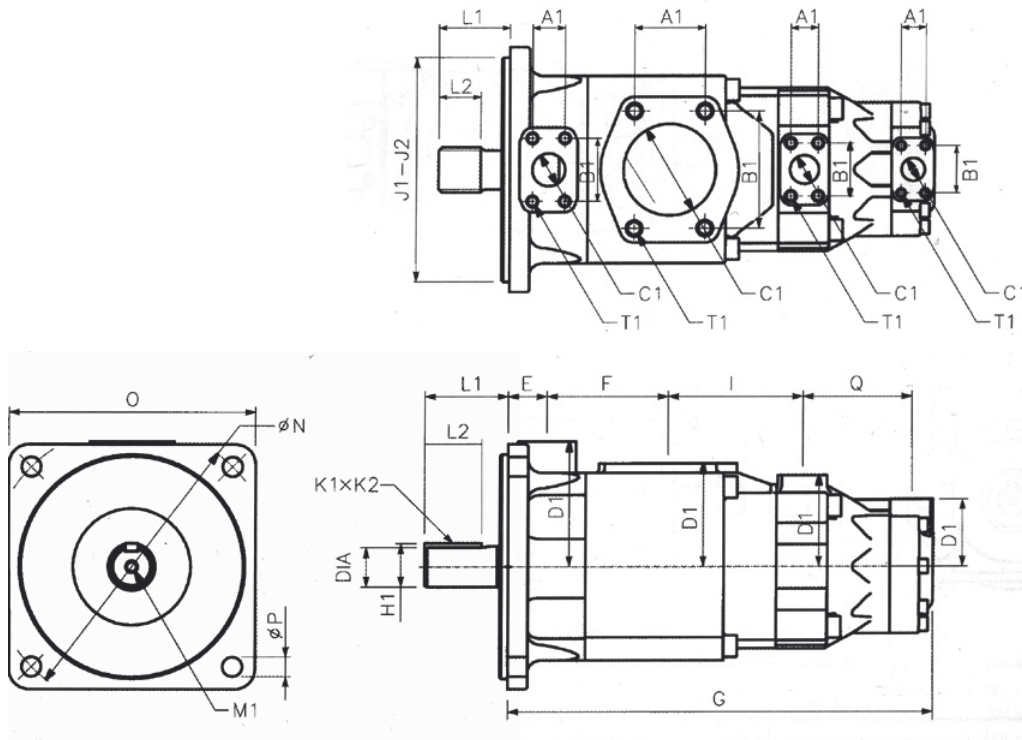
Shaft extension

Model	Shaft code	Max torque (N.m)	L1	L2	DIA	K1xK2	H1	M1
T6DDC T67DDB(S)	1	686	84.0	49.3	31.750/31.700	7.94x7.89	35.27	M10x20
	2	1148	91.0	50.8	38.100/38.075	9.52x9.47	42.36	M10x20
	5	883	84.0	60.0	34.900/34.850	7.94x7.89	38.42	M10x20
	3	971	56.0	38.0	SAE J498b class1, Diametral pitch 12/24, 14T			-
	4	●	46.0	31.5	SAE J498b class1, Diametral pitch 12/24, 17T			-

● work at maximum flow and pressure.

Oil port			Flange	Install Dimensions(mm)				
				A1	B1	ΦC1	D1	T1 Thread
T67DDB(S)	P1	1-1/4"	F10	30.2	58.7	31.8	82.6	7/16"-14UNCx22.3
	P2	1-1/4"	F10	30.2	58.7	31.8	101.6	7/16"-14UNCx24.0
	P3	3/4"	F06	22.2	47.6	19.0	74.7	3/8"-16UNCx19.0
	S	4"	F32	77.8	130.2	101.6	115.0	5/8"-11UNCx30.0
T6DDC	P1	1-1/4"	F10	30.2	58.7	31.8	82.6	7/16"-14UNCx22.3
	P2	1-1/4"	F10	30.2	58.7	31.8	101.6	7/16"-14UNCx24.0
	P3	01: 3/4"	F06	22.2	47.6	19.0	74.7	3/8"-16UNCx19.0
		00: 1"	F08	26.2	52.4	25.4	74.7	
	S	4"	F32	77.8	130.2	101.6	115.0	5/8"-11UNCx30.0

**Installation Dimensions**



T6EDC	
E	42.9
F	133.3
G	468.0
I	148.4
J1	250h8
J2	250h8
ΦN	315.0
O	273.0
ΦP	22.0
Q	120.0

T6EDCS T67EDB	
E	42.8
F	133.3
G	468.0
I	148.4
J1	165.10
J2	165.05
ΦN	315.0
O	273.0
ΦP	22.0
Q	120.0

**Shaft extension**

Model	Shaft code	Max torque (N.m)	L1	L2	DIA	K1xK2	H1	M1
T67EDB, T6EDC, T6EDCS	1	●	92.0	63.0	45h7	14h7x9	48.5	M12x24
T6EDCS	2	●	100.0	63.5	44.45/44.40	11.11x11.06	49.3	1/2-UNCx24
	3	●	75.0	48.8	SAE J498b class1, Diametral pitch 8/16, 13T			-

● work at maximum flow and pressure.

Oil port			Flange	Install Dimensions(mm)				
				A1	B1	ΦC1	D1	T1 Thread
T67EDB	P1	1-1/2"	F12	35.7	69.9	37.1	139.7	1/2"-13UNCx30.0
	P2	1-1/4"	F10	30.2	58.7	31.8	101.6	7/16"-14UNCx24.0
	P3	3/4"	F06	22.2	47.6	19.0	74.7	3/8"-16UNCx19.0
	S	4"	F32	77.8	130.2	101.6	115.0	5/8"-11UNCx30.0
T6EDC T6EDCS	P1	1-1/2"	F12	35.7	69.9	37.1	139.7	1/2"-13UNCx30.0
	P2	1-1/4"	F10	30.2	58.7	31.8	101.6	7/16"-14UNCx24.0
	P3	01: 3/4"	F06	22.2	47.6	19.0	74.7	3/8"-16UNCx19.0
		00: 1"	F08	26.2	52.4	25.4	74.7	
S	4"	F32	77.8	130.2	101.6	115.0	5/8"-11UNCx30.0	

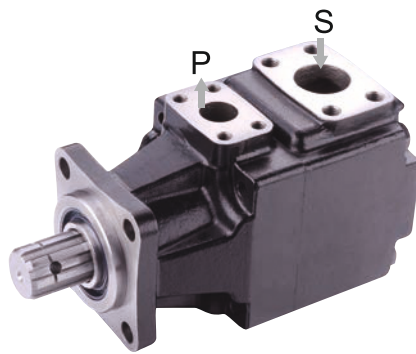
## T6GC、 T7GB、 T6GCC、 T67GCB、 T7GBB Series-pin Vane Pumps

The high pressure and high performance pin type vane pump is applicable to engineering machinery, especially to mobile machinery.

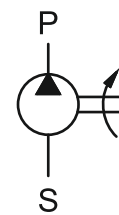
### The main features:

- 1.The improved bearing structure and rectangle spline shaft design can be driven by motor or gearbox directly.
- 2.Double shaft seal structure, is fit for bad situations of mobile machinery.
- 3.Adopt insert structure, the cartridge kit of T6C and T7B can be interchangeable completely, very convenient for repair.

### T6GC、 T7GB Series- single pumps



Hydraulic Sign



### Model Designation

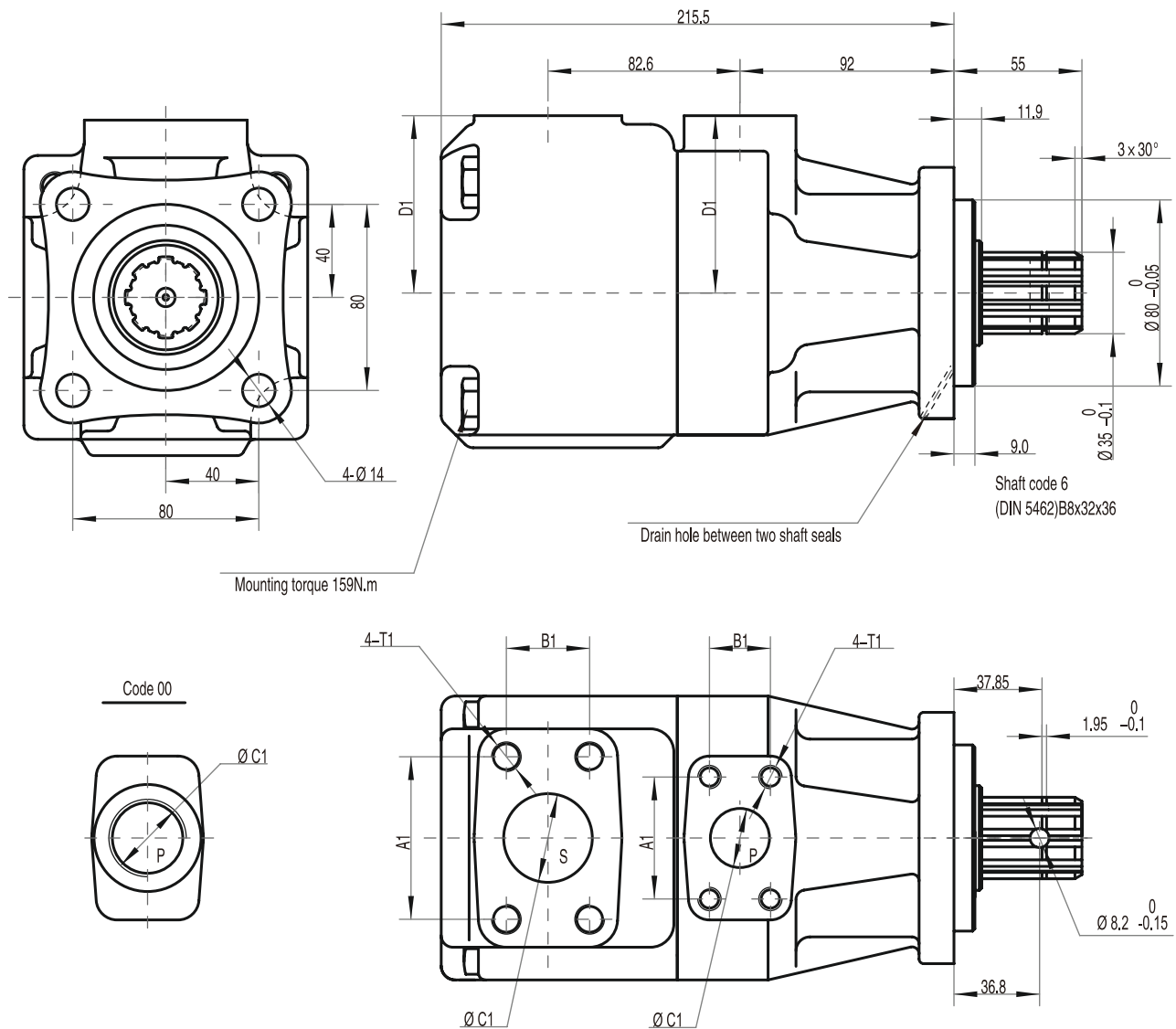
T6GC	-B10	-6	R	00	-A	1	01
Series	Flow code	Shaft type	Rotation	Outlet Positions	Design number	Sealing Level	Port dimensions
T6GC	B03、 B05、 B06、 B08、 B10、 B12、 B14、 B17、 B20、 B22、 B25、 B28、 B31	See size of shaft	Views from shaft end of pump R-right hand for clockwise L- left hand for counter-clockwise	(Viewed from shaft end of pump) 00-Opposite inlet port 01-Inline with inlet 02-90 ° CCW from inlet 03-90 ° CW from inlet	A	1-S1, NBR Nitrile rubber  5-S5, Fluororubber	00: Flange 1"BSPP 01: Flange SAE 4 bolts(UNC) See installation dimensions
T7GB	B02、 B03、 B04、 B05、 B06、 B07、 B08、 B10、 B12、 B15						

B03: B means the two steering valve plate structure

The data of relevant series, model are unanimous. Please see T6 series-single pumps data

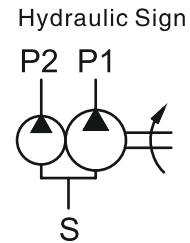
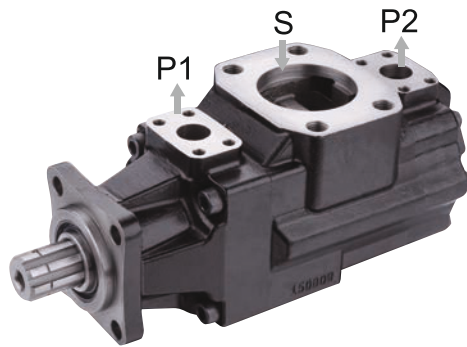
**Installation Dimensions**

T6GC、T7GB



Oil port			Flange	Install Dimensions(mm)				
				A1	B1	Ø C1	D1	T1 Thread
T6GC T7GB	P	01: 1"	F08	26.2	52.4	25.4	76.2	3/8"-16UNCx19.0
		00: 1"BSPP	-	-	-	1"BSPP	79.5	-
	S	1-1/2"	F12	35.7	69.9	38.1	76.2	1/2"-13UNCx22.4

## T6GCC、T67GCB、T7GBB Series-Double pumps



### Model Designation

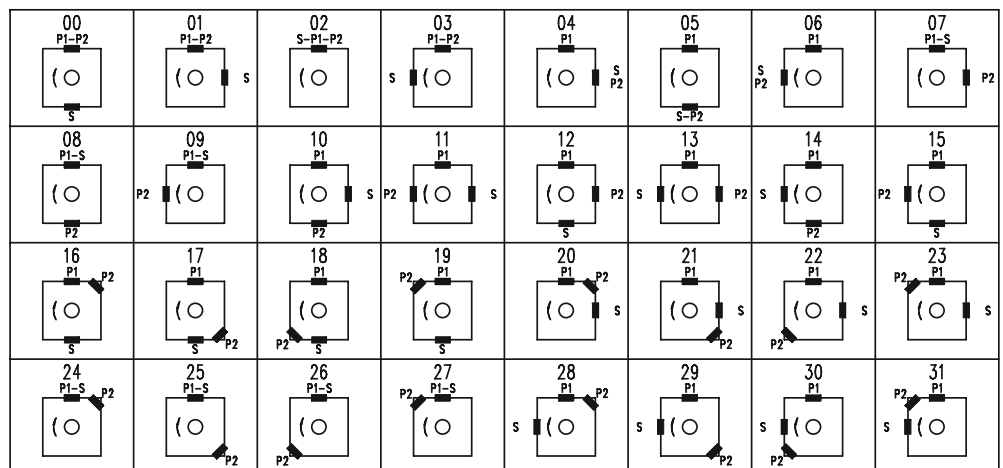
T6GCC	-B25	-B17	-6	R	02	-B	1	10
Series	Flow-shaft end Pump	Flow-cover end Pump	Shaft type	Rotation	Port Positions	Design number	Sealing Level	Port dimensions
T6GCC	B03、B05、B06、B08、B10、B12、B14、B17、B20、B22、B25、B28、B31	B03、B05、B06、B08、B10、B12、B14、B17、B20、B22、B25、B28、B31	See size of shaft	Views from shaft end of pump R-right hand for clockwise L-left hand for counter-clockwise	see below	B	1-S1, NBR Nitrile rubber 5-S5, Fluororubber	00、01、10、11, See installation dimensions
T67GCB	B03、B05、B06、B08、B10、B12、B14、B17、B20、B22、B25、B28、B31	B02、B03、B04、B05、B06、B07、B08、B10、B12、B15						
T7GBB	B02、B03、B04、B05、B06、B07、B08、B10、B12、B15	B02、B03、B04、B05、B06、B07、B08、B10、B12、B15						

B03: B means the two steering valve plate structure

The data of relevant series, model are unanimous. Please see T6 series-single pumps data

### Port positions(Views from shaft end of pump)

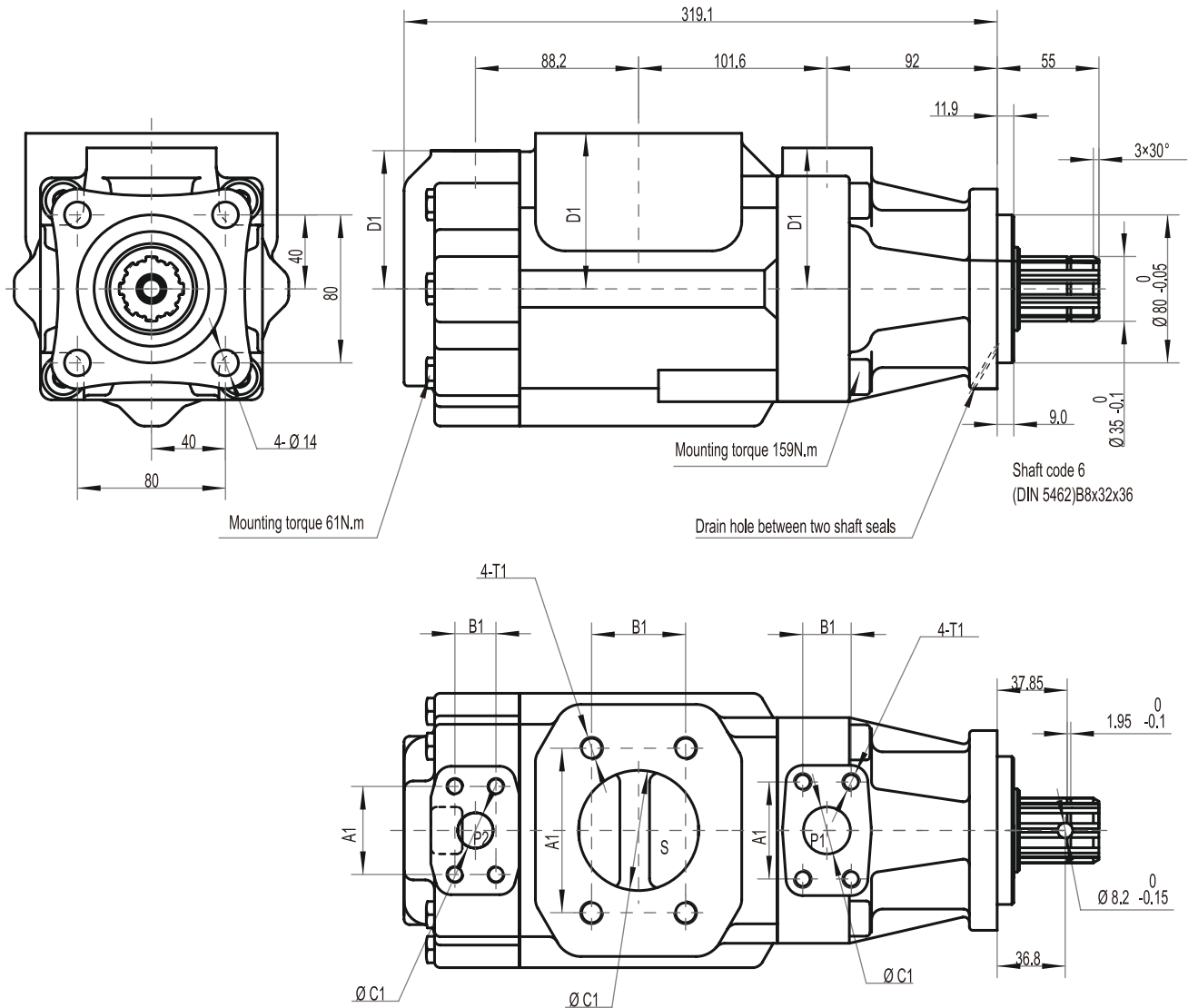
T6GCC  
T7GBB  
T67GCB





**Installation Dimensions**

T6GCC、T67GCB、T7GBB



Oil port			Flange	Install Dimensions(mm)				
				A1	B1	ΦC1	D1	T1 Thread
T6GCC T67GCB T7GBB	P1	1"	F08	26.2	52.4	25.4	76.2	3/8"-16UNCx19.0
	P2	01&11: 3/4"	F06	22.2	47.6	19.0	76.2	3/8"-16UNCx19.0
		00&10: 1"	F08	26.2	52.4	25.4	74.7	
	S	10&11: 2-1/2"	F20	50.8	88.9	63.5	84.1	1/2"-13UNCx23.9
00&01: 3"		F24	61.9	106.4	76.2	84.1	5/8"-11UNCx28.4	